



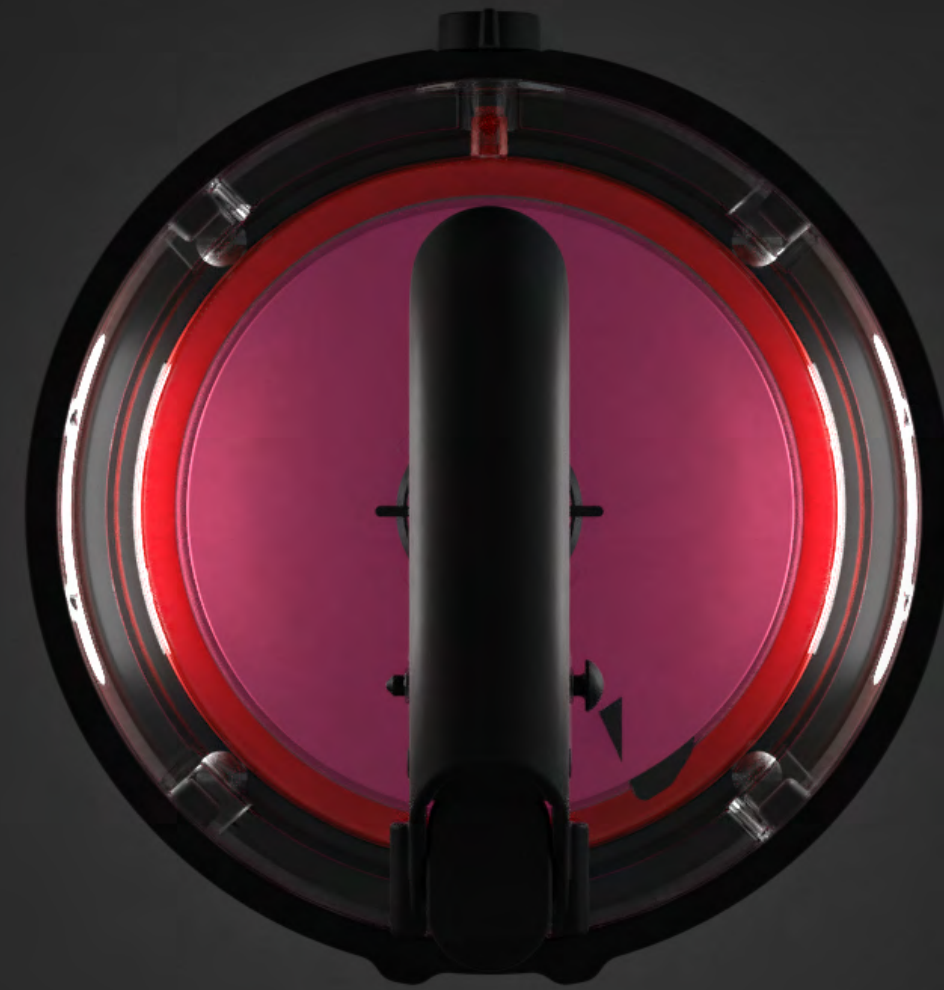
Throughout history, growth and development in any area of human relations have been possible by making real those ideas, ambitions and dreams that seemed unattainable.

Our dream was to be able to offer a high-capacity machine that could produce a wide variety of products in the smallest possible space, with an elegant and easy-to-handle design.

And we have made it a reality.



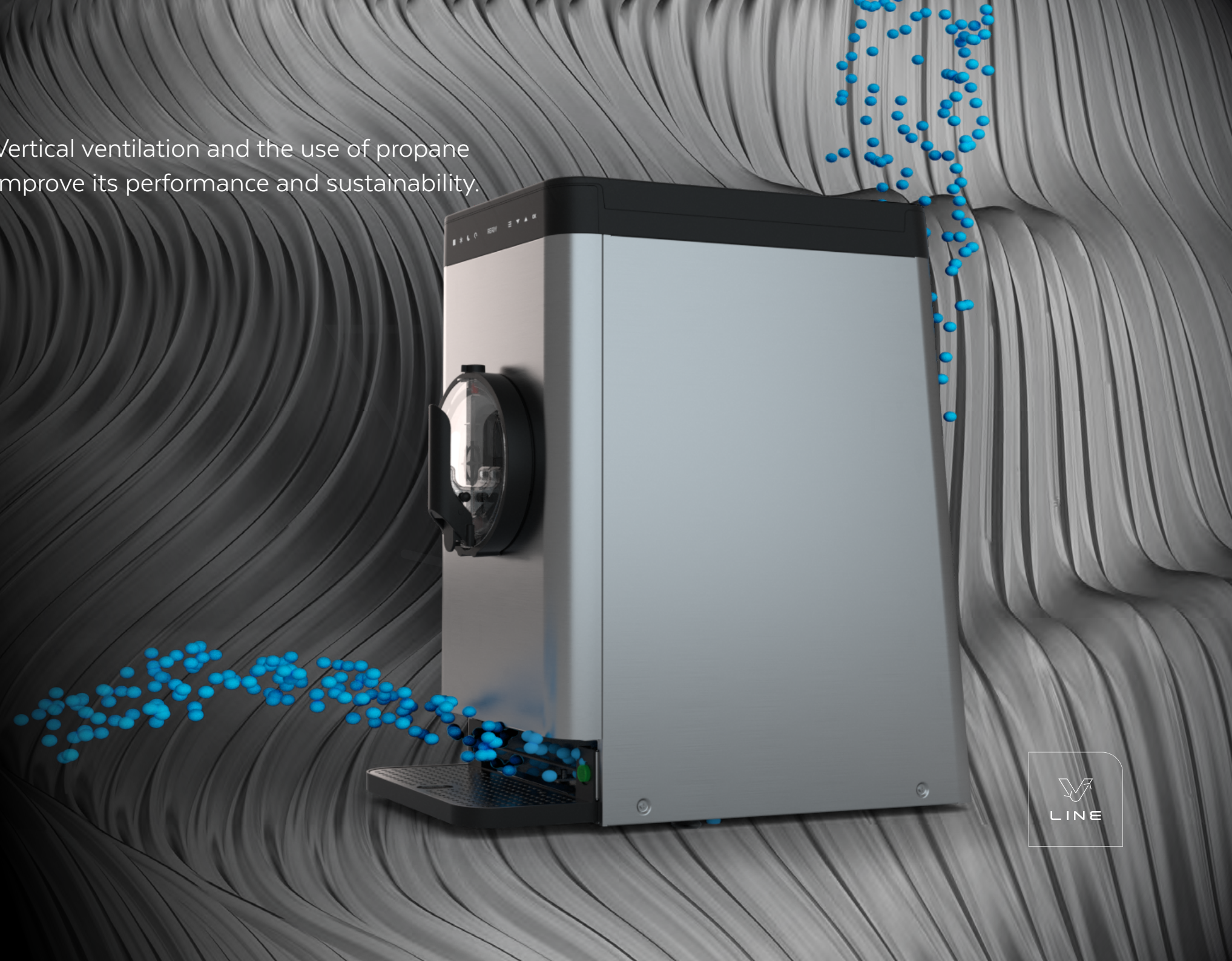
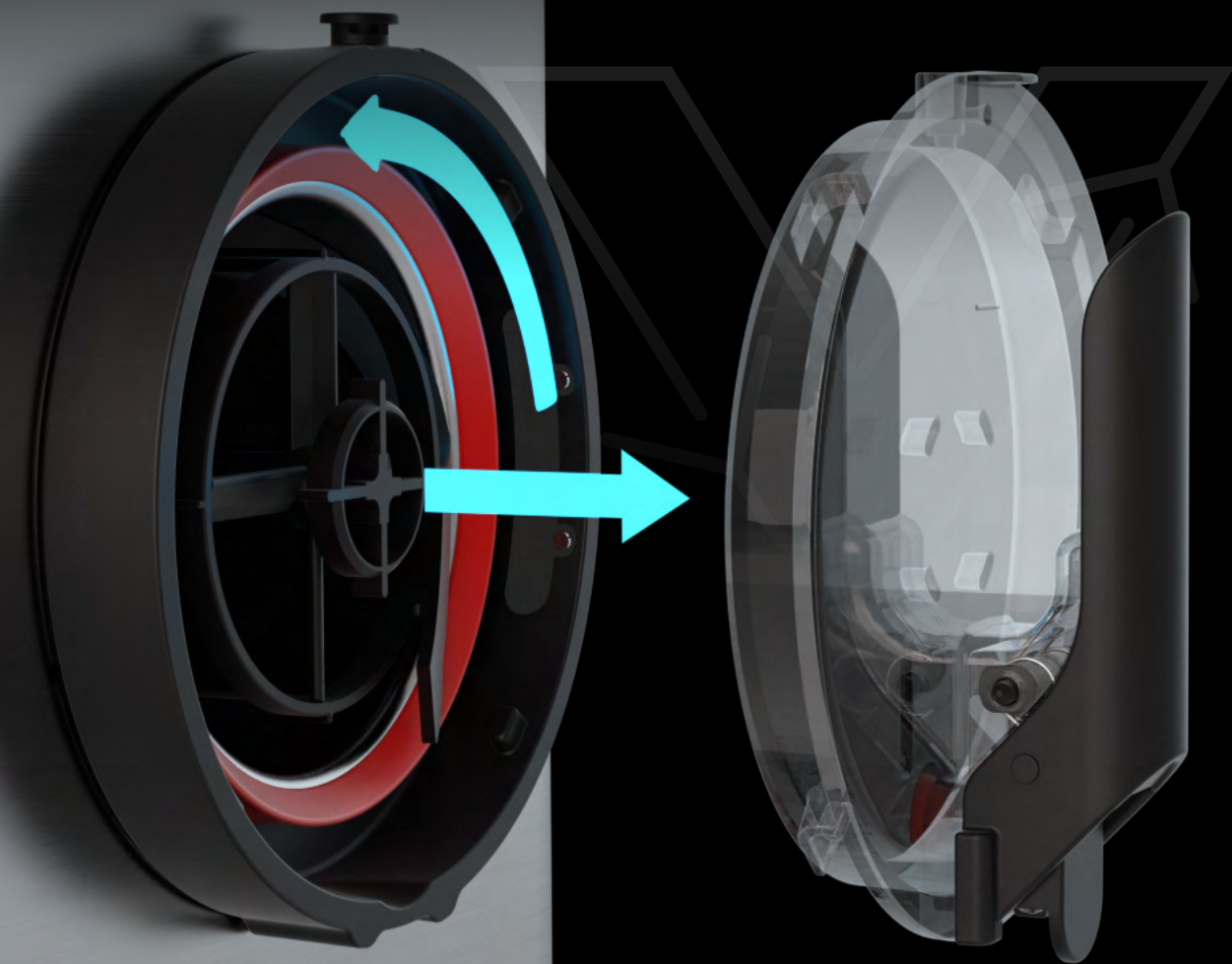
Its innovative conception catches everyone's eye.





Its simplicity and efficiency maximize work and make it much easier.

Vertical ventilation and the use of propane improve its performance and sustainability.



The machine reinforces immediate business and product recognition





Comfort and ease
of use in your day-to-day



Designed to bring the highest
possible quality to each product
from the beginning

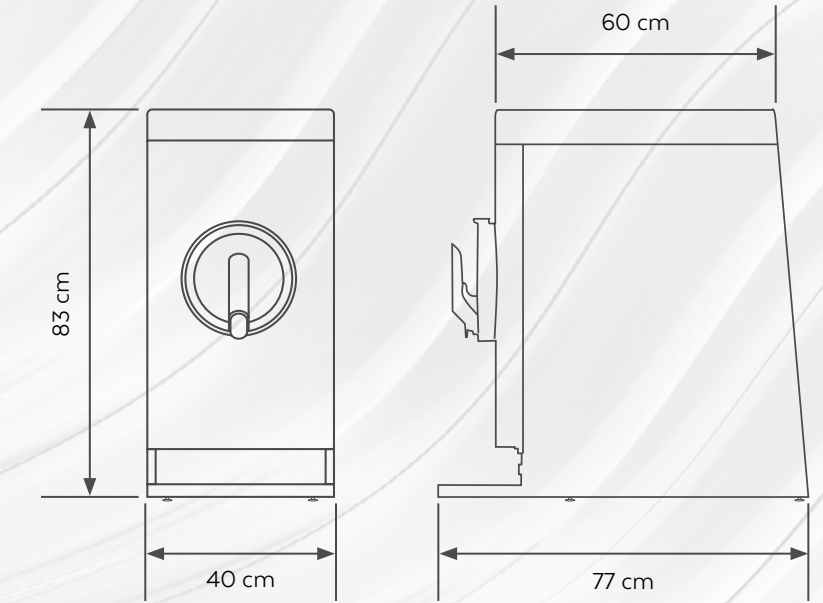




- Refrigerated hopper
- Product ready in less than 20 minutes*
- Direct drive cylinder mixer motor
- Brushless hopper mixer motor
- Modulated fan
- Multilanguage display
- Easy-to-remove filter

*room temperature 20° C

- Hopper capacity 18 l.
- Cylinder capacity 7 l.
- Voltage 220-240V/50-60 Hz
- Max. power 2000 W
- Amperage less than 13A
- Max. room temp. 40° C
- Refrigerant gas Propane (R-290)



Slush	Sherbet	Sorbet	Drinks	Frozen Cocktails	Dairy Slush	Frapuccinos	Cream	Juices	Soft Ice cream	Frozen yogurt
✓	✓	✓	✓	✓	✓	✓	✓			

