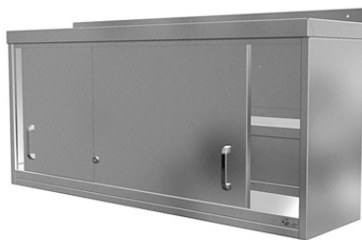


Model QWC123LS
Shown

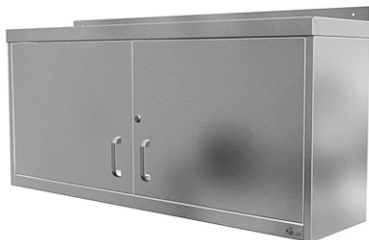


LOCKABLE WALL CUPBOARDS (SLIDING DOOR) SPECIFICATION

- ✓ Wall mounted commercial s/steel fully enclosed lockable storage cupboard.
- ✓ Outer panels, doors, top & base shelf constructed in 430 gd (0.9 thk.) s/steel.
- ✓ Available in 900, 1000, 1200, 1500 & 1800 mm standard lengths.
- ✓ Adjustable height 430 gd (1.2 thk.) s/steel storage mid-shelf.
- ✓ Standard cupboard height 540 mm. Standard cupboard depth 300 mm.
- ✓ 40mm (H) rear up stand to roof for sealing against a surface where items may be stored on top. (Roof upstand fixing hole size Ø 7.2mm).
- ✓ Full height flush steel back panel.
- ✓ Wall mounting hooks supplied.
- ✓ Models feature lockable top hung sliding steel doors fitted with chrome D handles.
- ✓ Fitted with central door channel guides.
- ✓ Plunge lock and two suited keys.

Code	Description	Height (mm)	Weight (kg)
QWC93LS	900 (L)×300 (D) Lock.Wall Cupd. (Sliding Door)	540	31
QWC103LS	1000 (L)×300 (D) Lock.Wall Cupd. (Sliding Door)	540	33
QWC123LS	1200 (L)×300 (D) Lock. Wall Cupd. (Sliding Door)	540	39
QWC153LS	1500 (L)×300 (D) Lock. Wall Cupd. (Sliding Door)	540	47
QWC183LS	1800 (L)×300 (D) Lock. Wall Cupd. (Sliding Door)	540	55

Model QWC123LH
Shown



LOCKABLE WALL CUPBOARDS (HINGED DOOR) SPECIFICATION

- ✓ Wall mounted commercial s/steel fully enclosed storage cupboard.
- ✓ Outer panels, doors, top & base shelf constructed in 430 gd (0.9 thk.) s/steel.
- ✓ Available in 450, 600, 750, 900 & 1200 mm standard lengths.
- ✓ Adjustable height 430 gd (1.2 thk.) s/steel storage mid-shelf.
- ✓ Standard cupboard height 540 mm. Standard cupboard depth 300 mm.
- ✓ Rear up stand to roof for sealing against a surface where items may be stored on top. (Roof upstand fixing hole size Ø 7.2mm).
- ✓ Full height flush steel back panel.
- ✓ Wall mounting hooks supplied.
- ✓ Feature lockable side hung steel doors fitted with chrome D handles.
- ✓ Barrel lock and two suited keys.

Code	Description	Height (mm)	Weight (kg)
QWC453LHL	450 (L)×300 (D) Lock. Wall Cupd. (L.Hinged Door)	540	18
QWC63LHL	600 (L)×300 (D) Lock. Wall Cupd. (L.Hinged Door)	540	21
QWC453LHR	450 (L)×300 (D) Lock. Wall Cupd. (R.Hinged Door)	540	18
QWC63LHR	600 (L)×300 (D) Lock. Wall Cupd. (R.Hinged Door)	540	21
QWC753LH	750 (L)×300 (D) Lock. Wall Cupd. (Hinged Doors)	540	26
QWC93LH	900 (L)×300 (D) Lock. Wall Cupd. (Hinged Doors)	540	30
QWC123LH	1200 (L)×300 (D) Lock. Wall Cupd. (Hinged Doors)	540	37

Model QAWC753LH
Shown



LOCKABLE ANGLED CORNER WALL CUPBOARD SPECIFICATION

- ✓ Wall mounted commercial s/steel fully enclosed angled corner storage cupboard.
- ✓ Outer panels, doors, top & base shelf constructed in 430 gd (0.9 thk.) s/steel.
- ✓ Available in a 750mm standard angled corner length.
- ✓ Adjustable height 430 gd (1.2 thk.) s/steel storage mid-shelf.
- ✓ Standard cupboard height 540 mm. Cupboard shelf depth - up to 690 mm.
- ✓ Rear up stand to roof for sealing against a surface where items may be stored on top. (Roof upstand fixing hole Size Ø 7.2mm).
- ✓ Full height flush steel back panel.
- ✓ Wall mounting hooks supplied.
- ✓ Features **side hung steel doors** fitted with chrome D handles.
- ✓ Barrel lock and two suited keys.

Code	Description	Height (mm)	Weight (kg)
QAWC753LH	820 (W)×820 (D) Lock.Angle Cnr. Wall Cupd.(Door) (750mm Opening Angle Corner).	540	39

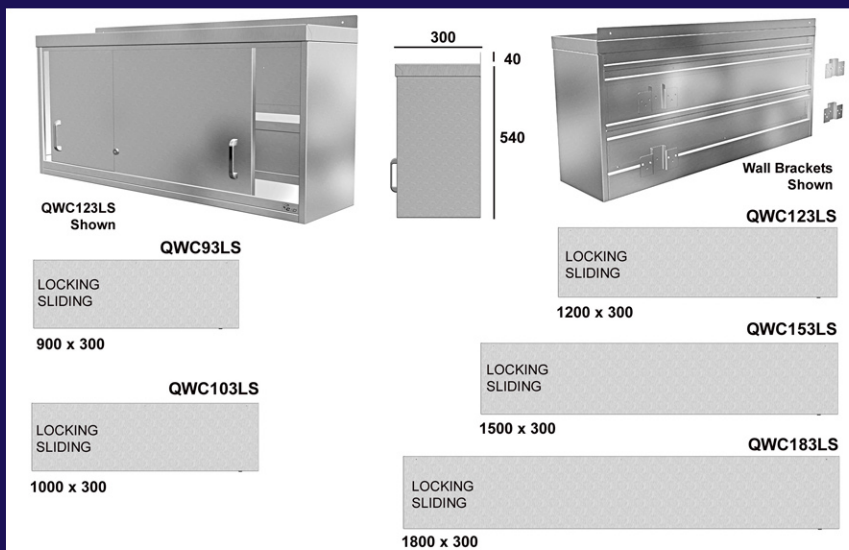


Introducing Quick Service
A range of popular sized, short lead time, high quality commercial fabrication products, held in stock and all available within 2-6 working days after order.

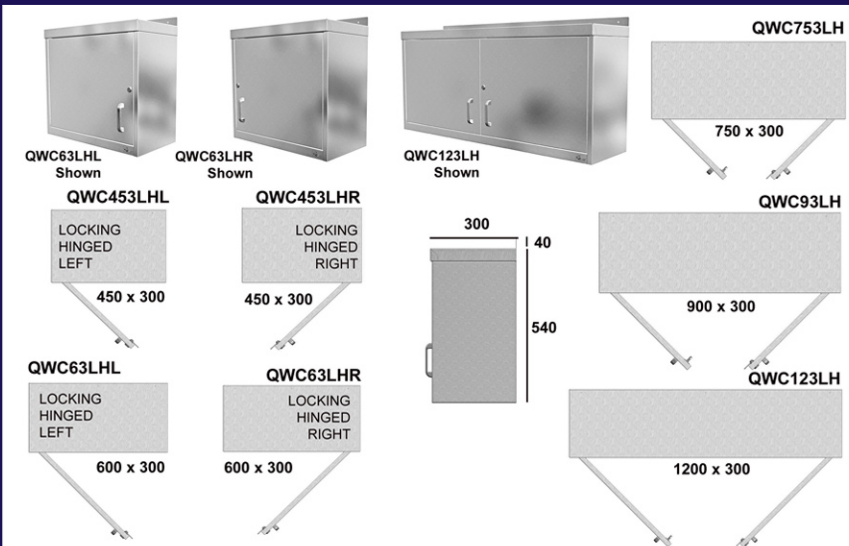
QUICK SERVICE LOCKABLE WALL CUPBOARDS



LOCKABLE SLIDING DOOR TYPE 300mm DEEP



LOCKABLE HINGED DOOR TYPE 300mm DEEP



LOCKABLE ANGLED CORNER (DOOR) TYPE 750mm ANGLE CORNER



Download All Technical Drawings From
www.cedfabsltd.co.uk



Tel : 01254 238 282

CED Fabrications Limited
Units A1-A4 Falcon Court
Clayton Business Park
Clayton-Le-Moors
Hyndburn
Lancashire
BB5 5JD

www.cedfabsltd.co.uk
sales@cedlimited.com

