

Light to Medium-Duty

ENERGY

B



### AWH912/PRO UK Main Features

Power supply: **13 amp plug**

Washer capacity: **9kg**

Drum volume: **64 Litres**

Product dimensions: **W600 x D640 x H850mm**

Maximum spin speed: **1200 RPM**

Programmes: **24**, including Steam Hygiene, Steam Refresh, Anti Allergy & Anti Stain

Energy usage: **0.567 kWh/cycle** (Eco cycle)

Water usage: **46 Litres/cycle** (Eco cycle)

**Full Aquastop** Protection system

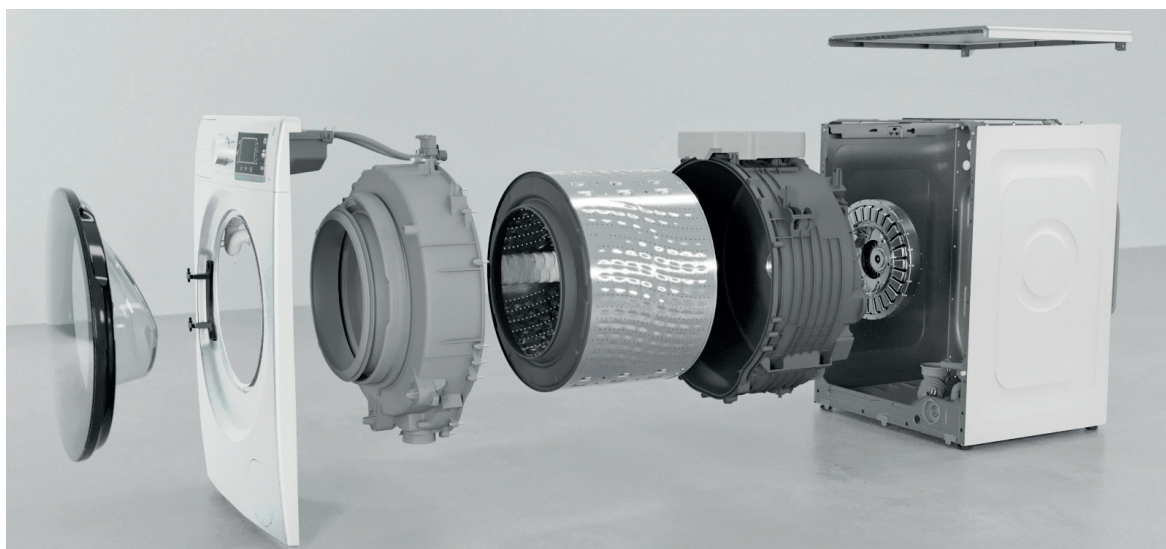
**Tested to 5,000 cycles** - compliant with Machinery Directive 2006/42/EN

**C00378975 stacking kit** sold separately

**1 Year Parts & Labour** commercial warranty



**6th Sense Technology:** When it comes to laundry, saving energy matters. Whirlpool Professional products knows exactly how to do it, thanks to 6th Sense Technology that uses sensors, a flow meter and pressure switch to determine the exact load weight and adjust energy accordingly. In this way, the premium wash offers an outstanding and efficient cleaning performance with great savings: up to 45% of energy, on every wash.



**Warranty:** 1 Year Parts and Labour / **Delivery:** 2 to 3 working days



**ZEN Technology:** The AWH912 features the innovative ZEN Motor, which is directly attached to the drum without the traditional belt, delivering outstanding cleaning results while minimizing noise and vibrations. Thanks to the direct rotation, the set of movements determined by the load and selected programme are more precise, meaning optimized energy efficiency and improved steadiness.



**Steam Hygiene:** Forget bacteria. Pure, perfect cleaning become effortless. When Steam Hygiene is activated, laundry get sanitized by a hot steam flow at the end of the cycle. Air at 70°C/80°C fills the drum for 30 minutes, neutralizing up to 99.9% of bacteria with no chemicals, in a powerful and natural way.



**Fresh Care+:** Unloading the washer the very moment the cycle is over is no longer essential to avoid bad odours and creases: Fresh Care+ takes care of both. Once the cycle is over, a steam flow is released inside the drum, gently massaging the load with several slow bidirectional oscillations. These combines actions keep clothes fresh inside the washer for up to 6 hours after the end of the cycle, preventing the proliferation of the main odour sources.



**Anti Stain Cycle:** This exclusive professional programme capable of removing more than 100 stains in just one hour. It is perfect washing programme for businesses with a rapid turnover of table clothes and towels that need to be washed quickly and effectively.



**Anti Allergy Cycle:** A special programme that eliminates all the detergent traces and 99.99% of pollens, house dust mites, pet hair, and much more. Ideal for environments that require high levels of cleanliness due to groups or individuals with high susceptibility to illness, for example: care homes and nursery schools.

Main Features	
GTIN number	8003437641510
12NC number	859991660650
Load capacity	9kg
Maximum spin speed	1200 RPM
Type of control panel	LCD
Type of timer	Electronic
Panel language	Symbol/English
Main colour of product	White
Plug type	UK
Drum volume	64 Litres
Noise insulation	Zen insulation
Water protection system	Full aquastop + 1 Eltek
Number of programmes	24
Drum material	Stainless Steel
Water supply	Cold fill only

Technical & Performance Features	
Gross/Nett weight	81.5kg / 80kg
Product dimensions (mm)	W600 x D640 x H850
Packed product dimensions	W677 x D699 x H878
Voltage	220-240V
Frequency	50 Hz
Connection rating	1700W
Energy usage (Eco cycle)	0.567 kWh per cycle
Water usage (Eco cycle)	46 Litres per cycle
Remaining moisture	53%
Spin/Wash noise level	71/48 dBA
Noise class	A
Energy efficiency class	B
Spin drying efficiency class	B
Type of motor	Direct drive
Heating type	Electric

**Warranty:** 1 Year Parts and Labour / **Delivery:** 2 to 3 working days